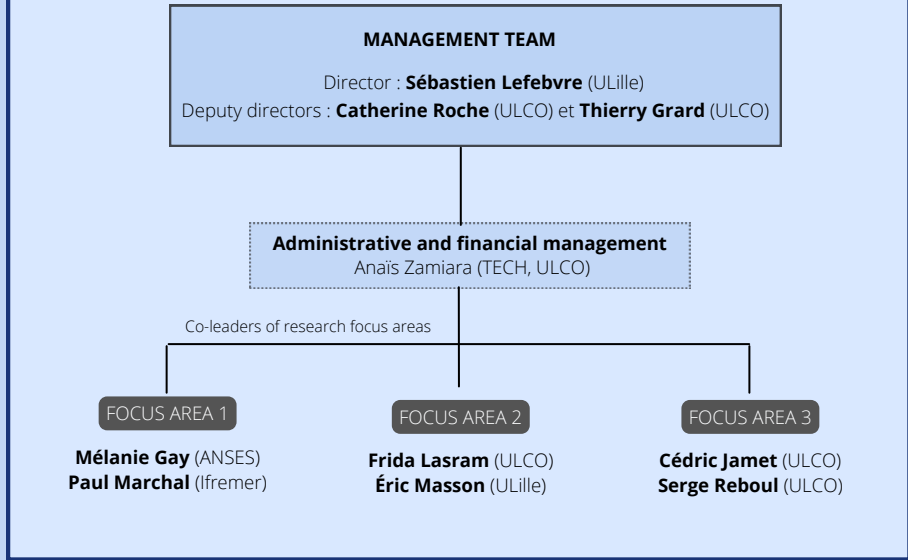


Organisation of the research federation Campus de la Mer

EXECUTIVE BOARD

Management team + 6 co-leaders of research focus areas



Trusteeship Council

Sophie Fourmentin, Vice-President for Research and Partnerships Commission ULCO
Olivier Colot, Vice-President for Research ULille
 Chantal Compère, Chief Scientific Officer Ifremer
Nicolas Canivet, Strategy & Programmes Department Anses
Éric Monflier, Vice-President for Research UArtois

Scientific Advisory Board

Émilie Poisson-Caillaud (LISIC)
Mariantonia Lo Prete (TVES)
Périne Doyen (BioEcoAgro)
Sébastien Monchy (LOG)
Viviane Bout (LOG)
Thomas Brauge (ANSES LSA)
Carolina Giraldo (Ifremer LRHBL)
Pierre Cresson (Ifremer LRHBL)

FULL BOARD

Executive board + 14 Heads of research laboratories

- | | |
|--|---|
| ANSES-LSA - Laurent Laloux | LMPA - Carole Rosier |
| BioEcoAgro - Jean-Louis Hilbert | LOG - Hubert Loisel |
| HLLI - Jean-Louis Podvin | TVES - Philippe Deboudt |
| LARJ - Sophie Moreil | LISIC - Sébastien Vérel |
| Ifremer LRHBL - Christophe Loots | LPCA - Gaël Mouret |
| Ifremer LHMar - Christophe Maisondieu | LG12A - Hamid Allaoui |
| Ifremer LERBL - Alain Lefebvre | UTA - Patrick Martin Patrick (Directeur site Artois) |